

3x3m Zoom Tent Canopy ZT33-XAF

Top total area including bleed:
2992 (w) x 1832 (h) mm per Side

Bottom total area including bleed:
2992 (w) x 408 (h) mm per Side

4 Artwork sides are required for 1 Tent Canopy

Please keep all text, logos and critical design elements to the inside of the safe area indicated by the green keyline.

IMPORTANT NOTE: Hook and loop fastener is required to attach a full wall to the tent canopy indicated by the Grey Bars. Loop fastener will not be sewn onto the canopy unless a full wall is also ordered.

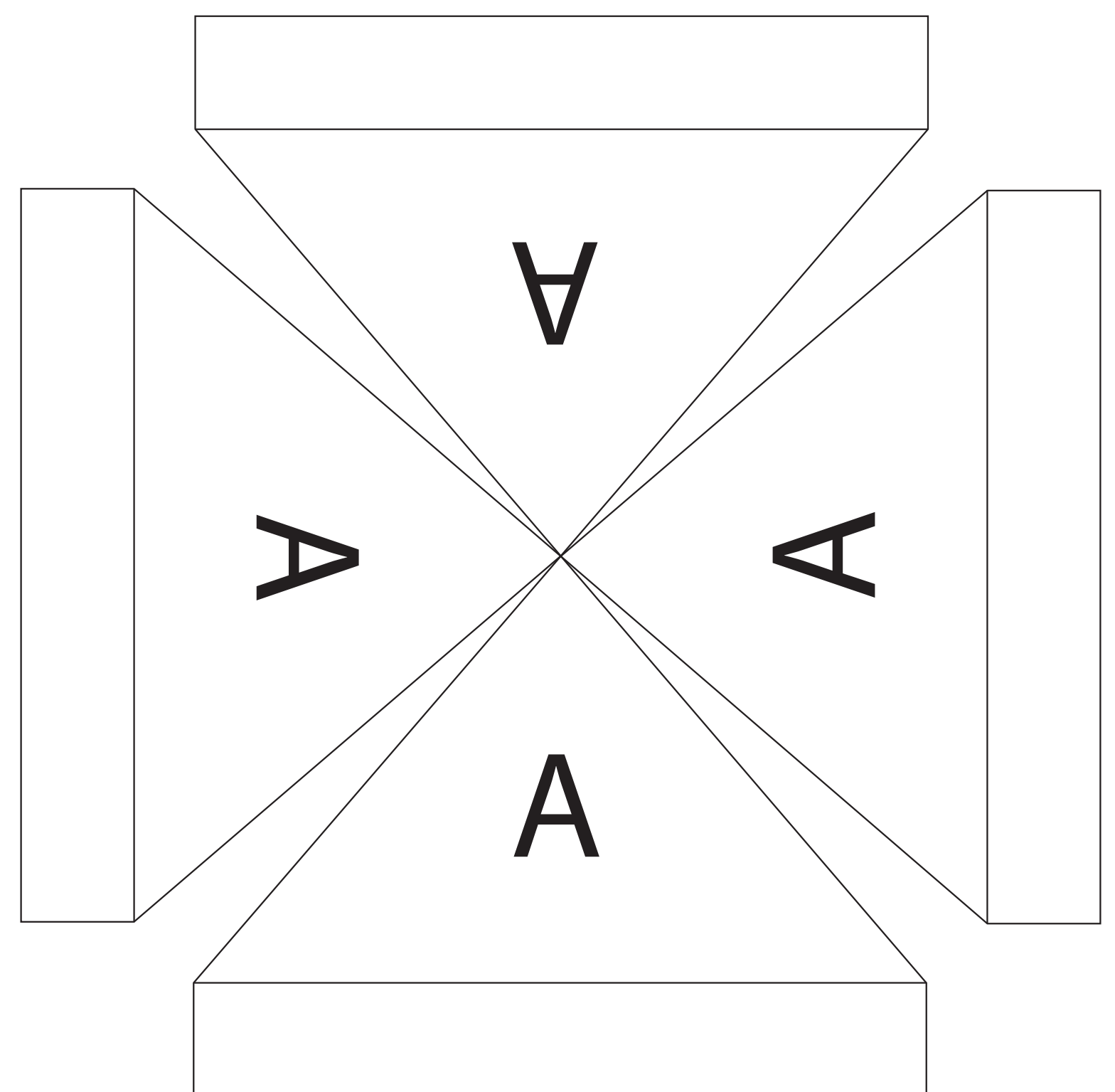
Please note this template is created for our own fabric characteristics and may need to be adjusted to suit other fabrics.

General guidelines

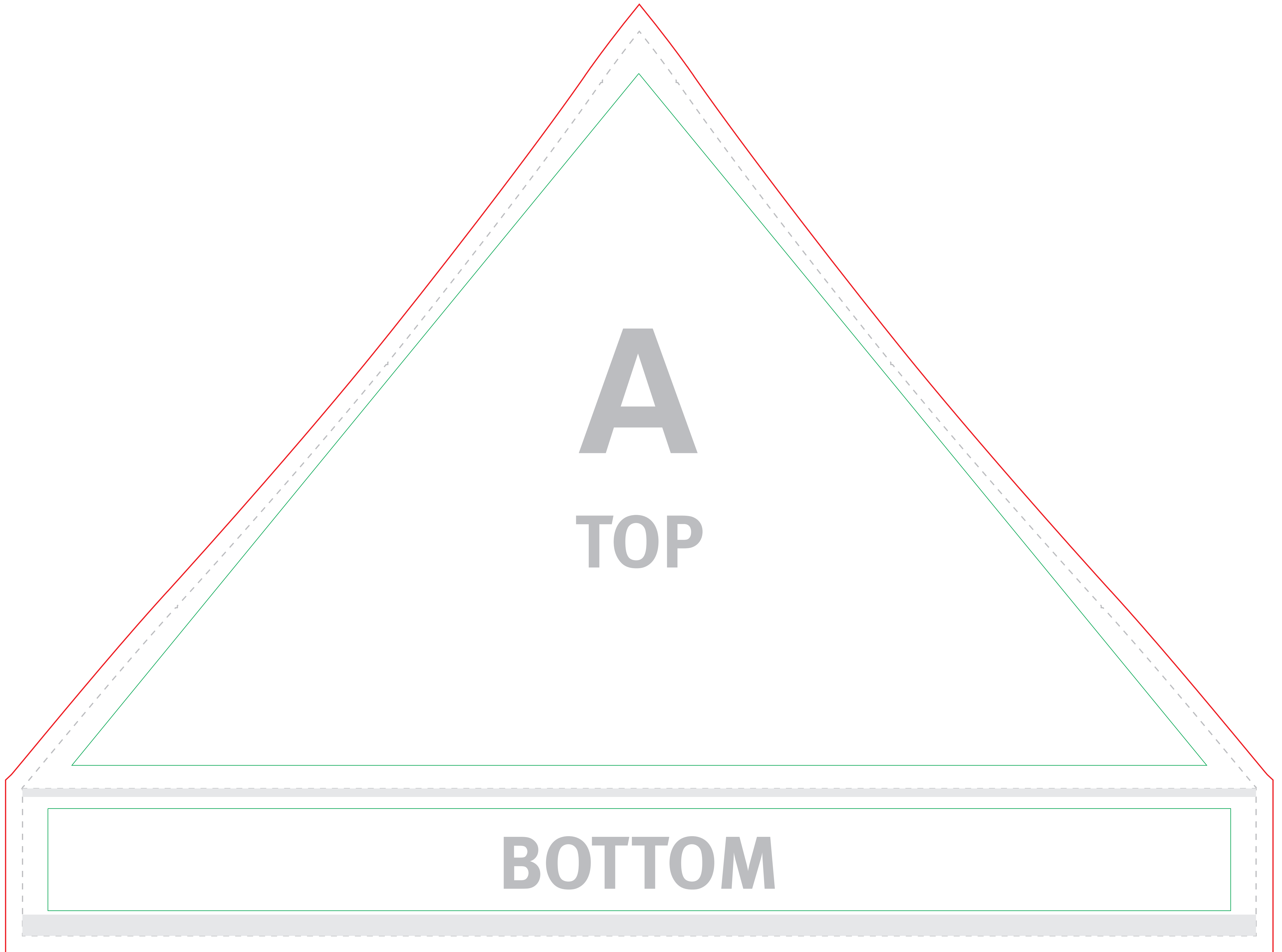
- CMYK
- Convert Pantone colours to CMYK.
- Do not supply RGB images.
- Do not embed images, supply them.
- Resolution must be 300 dpi at 25% of output size.
- All fonts must be converted to outlines.
- Please supply artwork as PDF or Illustrator EPS files.

This template

- Is supplied at 25% of finished size.
- Includes bleed (as shown by the red keyline).
- Overall template size:
748.5 (w) x 560 (h) mm



Graphic will be finished as seen above. Edges will be hemmed together to form tent graphic.



A
TOP

BOTTOM

**IMPORTANT NOTE: Hook and loop fastener is required to attach a full wall to the tent canopy indicated by the Grey Bars.
Loop fastener will not be sewn onto the canopy unless a full wall is also ordered.**